



OPTION PARTS

Wireless kit



WARNING



- Fasten the wiring to the terminal securely and hold the cable securely so as not to apply unexpected stress on the terminal. Loose connection or hold will cause abnormal heat generation or fire. 
- Make sure the power supply is turned off when electric wiring work. Otherwise, electric shock, malfunction and improper running may occur. 



CAUTION

- DO NOT install the wireless kit at the following places in order to avoid malfunction.

(1) Places exposed to direct sunlight	(8) Places where the receiver is influenced by the fluorescent lamp (especially inverter type) or sunlight.
(2) Places near heat devices	(9) Places where the receiver is affected by infrared rays of any other communication devices
(3) High humidity places	(10) Places where some object may obstruct the communication with the remote controller
(4) Hot surface or cold surface enough to generate condensation	
(5) Places exposed to oil mist or steam directly	
(6) Uneven surface	
(7) Places affected by the direct airflow of the AC unit.	


- DO NOT leave the wireless kit without the cover. In case the cover needs to be detached, protect the receiver with a packaging box or bag in order to keep it away from water and dust. 

Note

- Instruct the customer how to operate it correctly referring to the instruction manual.
- For the installation method of the air conditioner itself, refer to the installation manual enclosed in the package.

(f) Except for FDT, FDTC, FDK, FDE & FDFW Series (RCN-KIT3-E)

PJZ012D060

This product is dedicated for heat pump unit. Never install on the unit dedicated for cooling.

(1) Wireless kit model

Model
RCN-KIT3-E

(2) Accessories (Confirm the following accessories).

① Light detection adaptor		1
② Wiring (3m)		1
③ Parts set (A)		1
④ Parts set (B)		1
⑤ Parts set (C)		1
⑥ Wireless remote controller		1
⑦ User's manual		1

① Screw for receiver		2
② Fixing band		1
③ Clamp		5
④ Screw for clamp		5

① Remote controller holder		1
② Screw for holder		2
③ AAA dry cell battery (R03)		2

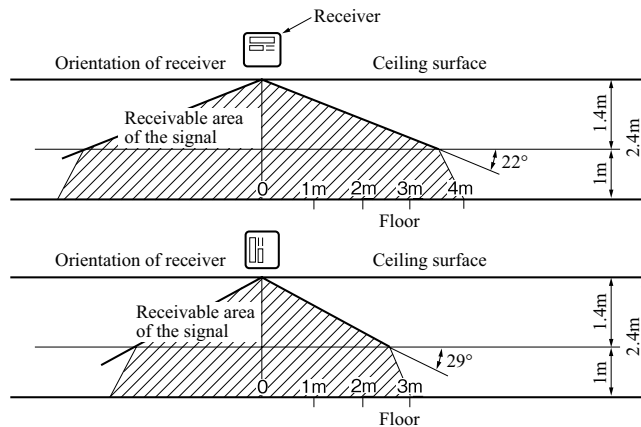
① Receiver installation bracket		1
② Screw for the bracket		2
③ Installation fitting		2

(3) Wireless remote controller's operable area

(a) When installed on ceiling

① Standard reachable area of the signal

[Condition] Illuminance at the receiver : 300lux (when no lighting is installed within 1m of the receiver in an ordinary office.)

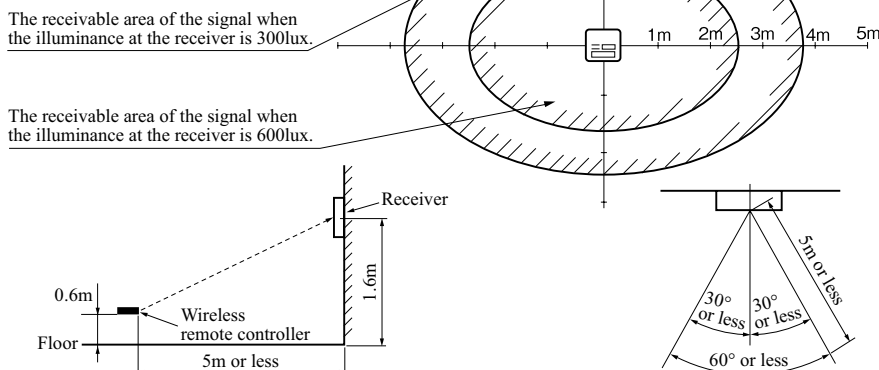


② Correlation between illuminance at the receiver and reachable area of the signal in a plain view.

[Condition] Correlation between the reachable area of the signal and illuminance at the receiver when the remote controller is operated at 1.1m high under the condition of ceiling height of 2.5m. When the illuminance becomes double, the area is narrowed down to two third.

(b) When installed on wall

[Condition] Illuminance at the receiver : 800lux.



(4) How to install the receiver

The following two methods can be used to install the receiver onto a ceiling or a wall.

Select a method according to the installation position.

<Installation position>

- ① Direct installation onto the ceiling with wood screws.
- ② Installation with accessory's bracket

(a) Drilling of the ceiling (ceiling opening)

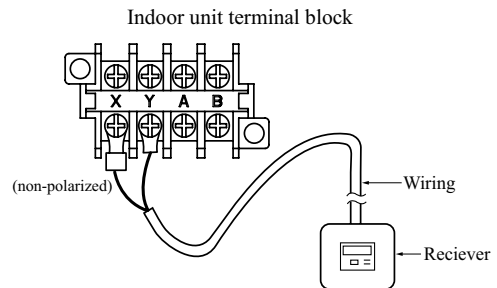
Drill the receiver installation holes with the following dimensions at the ceiling position where wires can be connected.

(A) Direct installation onto the ceiling with wood screws.	88mm (H) × 101mm (W)	
(B) Installation with enclosed bracket.	108mm (H) × 108mm (W)	

(b) Wiring connection of receiver

[Caution] Do not connect the wiring to the power source of the terminal block.

If it is connected, printed board will be damaged.

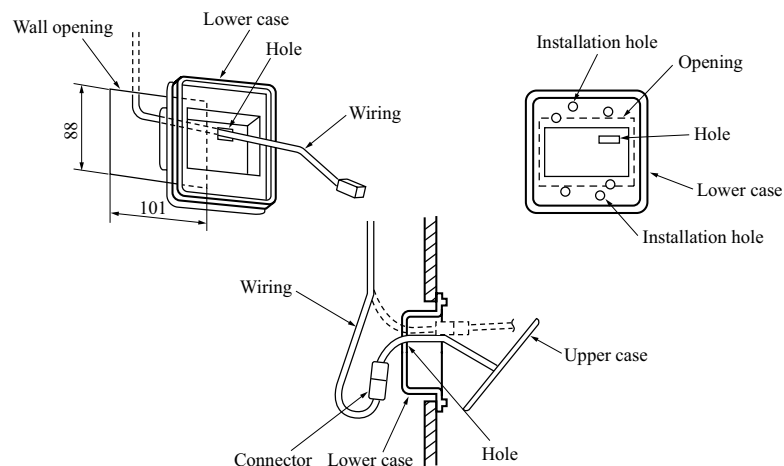


(c) Installation of the receiver

Remove the screw on the side of the receiver and split it into the upper case and lower case. Install the receiver with one of the two installation methods (A) or (B) shown below.

(I) Direct installation onto the ceiling with screws

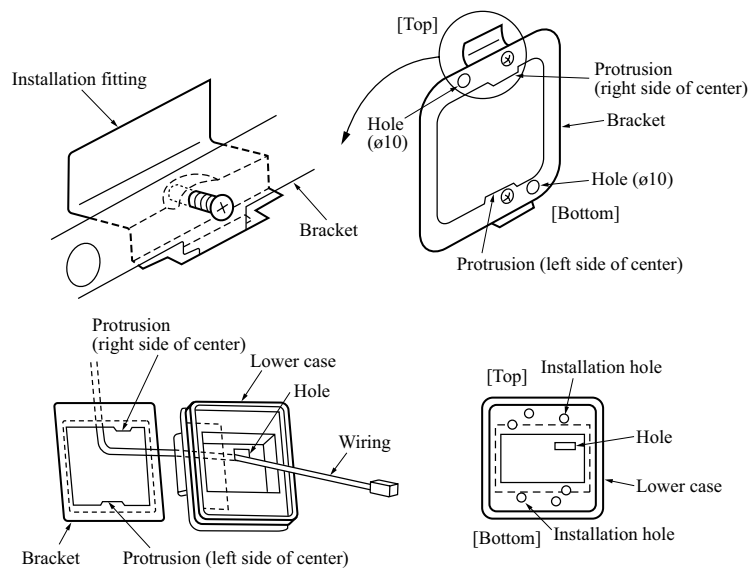
- ▷ Use this installation method when the ceiling is wooden, and there is no problem for strength in installing directly with wood screws.



- ① Put through the wiring from the back side to the hole of the lower case.
- ② Fit the lower case into the ceiling opening. Make sure that the clearance between the convex part of the back of the lower case and the ceiling opening must be as equal as possible on both sides.
- ③ Using the two installation holes shown above, fix the lower case onto the ceiling with the enclosed wood screws. (The other four holes are not used.)
- ④ Connect the wiring with the wiring from the upper case by the connector.
- ⑤ Take out the connector to the backside from the hole of the lower case putting through the wiring at ① .
- ⑥ Fit the upper case and the lower case, and tighten the screws.

(II) Installation with enclosed bracket

▷ Use this method when installaing onto a gypsum board (7 to 18mm), etc.



- ① Catch the two protrusion of the enclosed bracket onto the fitting as shown above, and temporarily fix with the screws. (The bracket has an up/down and front/back orientation. Confirm the top/bottom protrusion positions and the positional relation of the $\phi 10$ holes on the bracket and the installation hole on the lower case with the above drawing.)
- ② Insert the end of the installation fitting into the back of the ceiling from the opening, and tighten the screws to fix the bracket onto the ceiling.
- ③ Pass the wiring from the rear side through the hole on the lower case.
- ④ Fit the lower case onto the bracket, and fix the lower case to the bracket using the two installation holes shown above. (The other four holes are not used.)
- ⑤ Follow step ① to ⑥ for (A) to complete the installation.

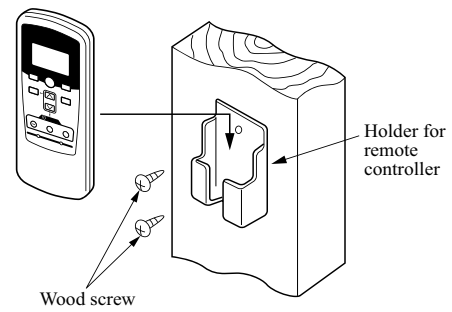
(5) Remote controller

Installation of the controller holder

Caution

DO NOT install it on the following places

1. Places exposed to direct sunlight
2. Places near heat devices
3. High humidity places
4. Hot surface or cold surface enough to generate condensation
5. Places exposed to oil mist or steam directly
6. Uneven surface

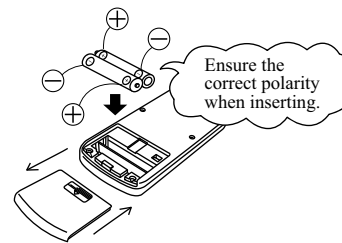


Installation tips for the remote controller holder

- Adjust and keep the holder upright.
- Tighten the screw to the end to avoid scratching the remote controller.
- DO NOT attach the holder to plaster wall.

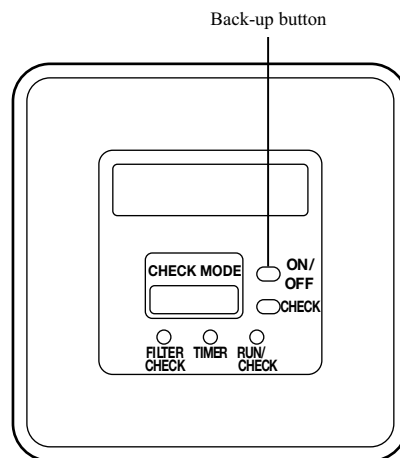
How to insert batteries

- ① Detach the back lid.
- ② Insert the batteries. (two AAA batteries)
- ③ Reattach the back lid.



(6) Cooling test run operation

- After safety confirmation, turn on the power.
- Transmit a cooling operation command with wireless remote controller, while the backup button on the receiver is pressed.
- If the backup button on the receiver is pressed during a test run, it will end the test run.
- If you cannot operate the unit properly during a test run, please check by consulting with inspection guides on the wiring diagram of outdoor units.



(7) Setting of wireless remote controller and receiver

(I) Methods of avoiding the malfunction due to the mixed communication

Do both procedures ① and ②.

This setting is to avoid the mixed communication with other household electric appliances or the mixed communication when two receivers are located closely.

① **Setting change of the wireless remote controller**

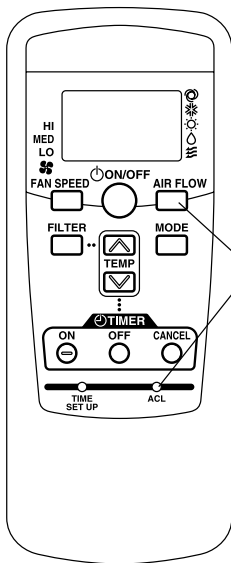
Pressing **ACL** and **AIRFLOW** button at the same time or inserting the batteries with pressing **AIRFLOW** button will customize the signal.

Note *When the batteries are removed, the setting will return to the default setting. Make sure to reset it when the batteries are replaced.

② **Setting the PCB of the receiver**

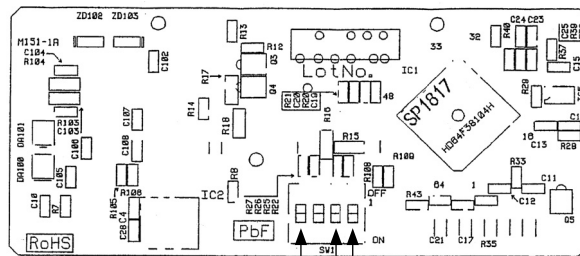
Turn SW1-1 off.

● **Wireless remote controller**



Setting to avoid mixed communication.

● **PCB of the receiver**



SW1-4 (Auto restart)

SW1-1 (Customized signal setting to avoid mixed communication)

SW1-2 (Receiver master/slave setting)

SW1-1	Customized signal setting to avoid mixed communication	ON : Normal OFF : Remote
SW1-2	Receiver master/slave setting	ON : Master OFF : Slave
SW1-4	Auto restart	ON : Valid OFF : Invalid

: Default setting

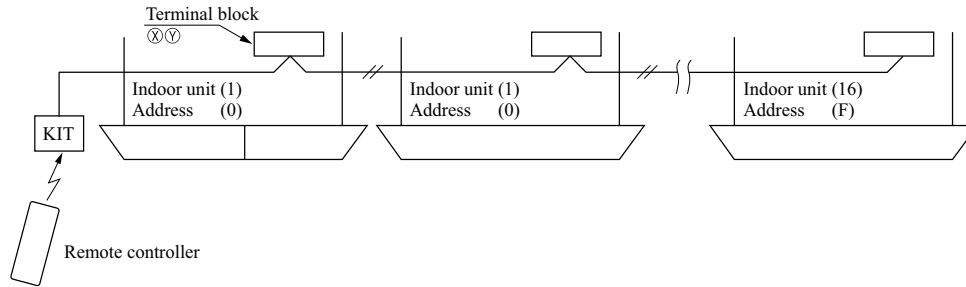
(II) Control plural indoor units with one remote controller

Up to 16 indoor units can be connected.

- ① Connect the XY terminal with 2-core wire. As for the size, refer to the following note.
- ② For Packaged air conditioner series, set the indoor unit address with SW2 on the indoor unit PCB from [0] to [F] so as not to duplicate.

Restrictions on the thickness and length of wire
(Maximum total extension 600m.)

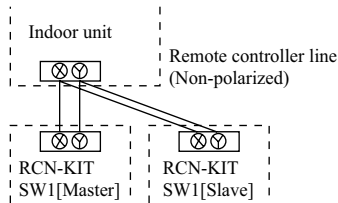
Standard	Restrictions
	Within 100m x 0.3 mm ²
	Within 200m x 0.5 mm ²
	Within 300m x 0.75mm ²
	Within 400m x 1.25mm ²
	Within 600m x 2.0 mm ²



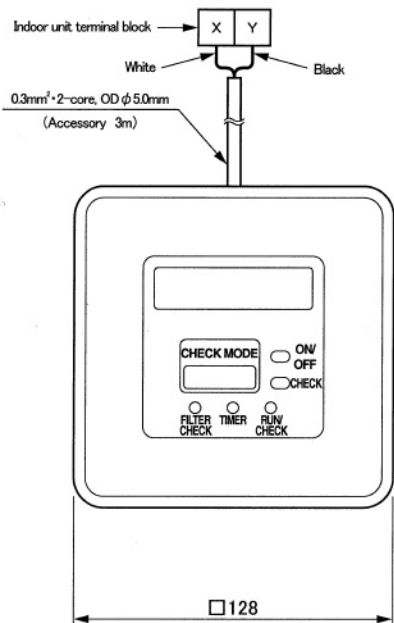
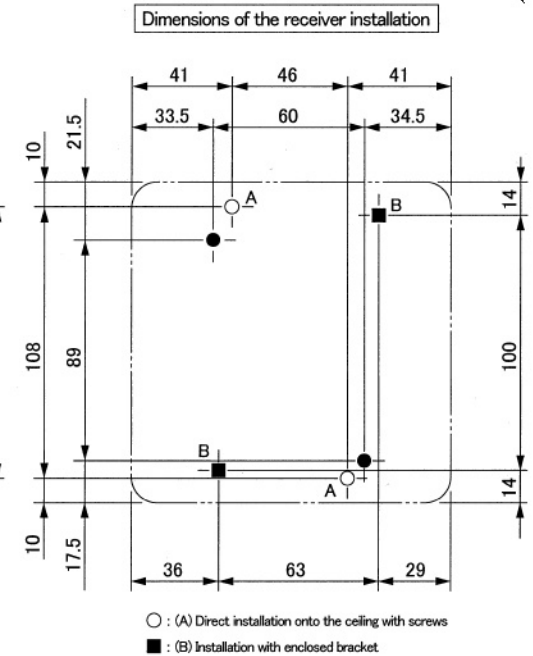
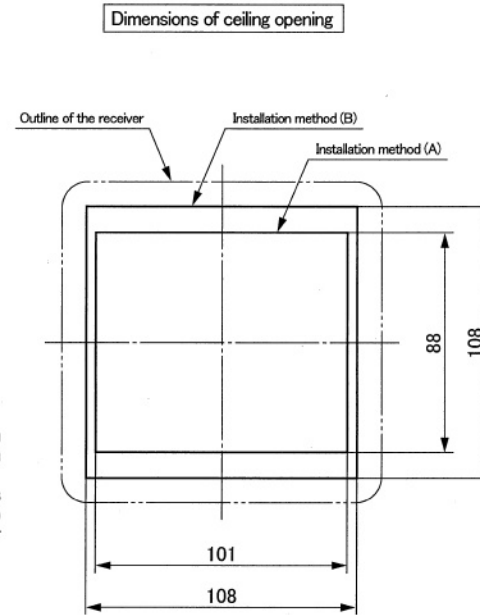
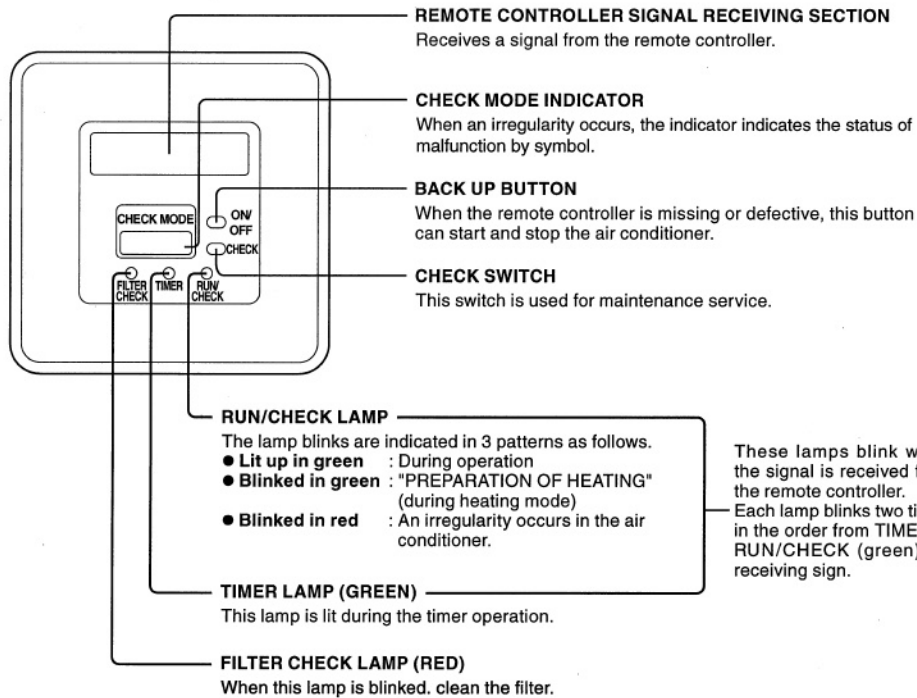
- ③ For VRF series, set the indoor unit address with SW1, SW2 and SW5-2 on the indoor unit PCB from [000] to [127] so as not to duplicate.

(III) Master/Slave setting when using plural remote controller

Up to two receivers can be installed in one indoor unit group.

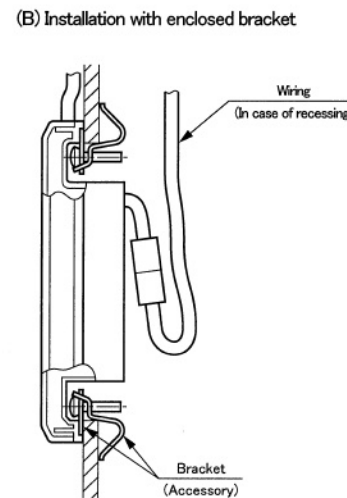
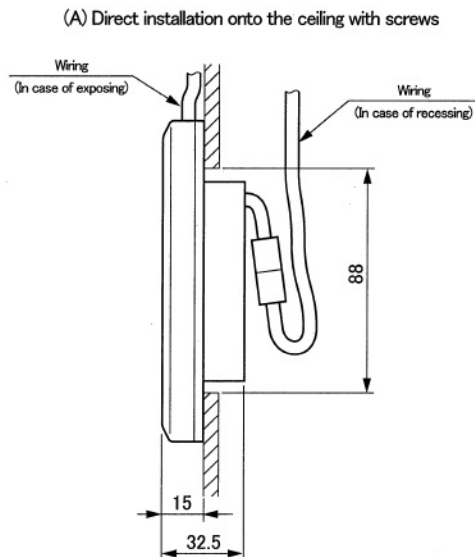


Switch	Setting	Function
SW1-2	ON	Master
	OFF	Slave



Installation of the receiver

(The following two methods can be used to install the receiver onto a ceiling or a wall.)
 Select a method according to the installation position



Installation of wireless kit

DO NOT install it on the following places in order to avoid malfunction.

- (1) Places exposed to direct sunlight
- (2) Places near heat devices
- (3) High humidity places
- (4) Hot surface or cold surface enough to generate condensation
- (5) Places exposed to oil mist or steam directly
- (6) Uneven surface
- (7) Places affected by the direct airflow of the AC unit
- (8) Places where the receiver is influenced by the fluorescent lamp (especially inverter type) or sunlight
- (9) Places where the receiver is affected by infrared rays of any other communication devices
- (10) Places where some object may obstruct the communication with the remote controller

Color	Pearl white (Munsell color N8.5 near equivalent.)
-------	------------------------------------------------------

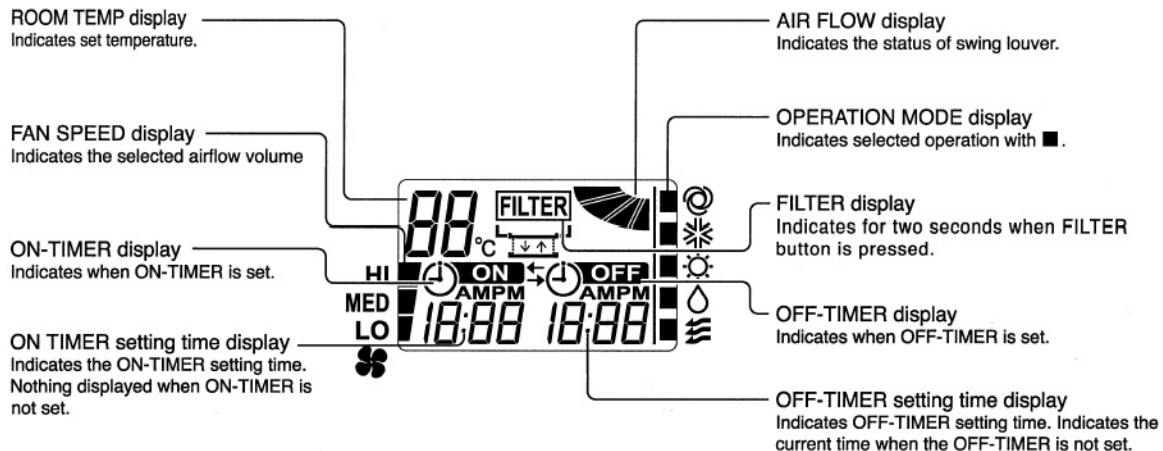
Adapted to **RoHS** direct

RCN-KIT3-E

Unit:mm

(2/2)

Display section



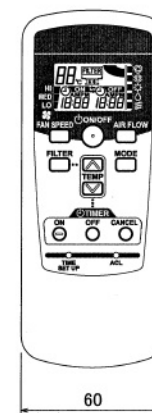
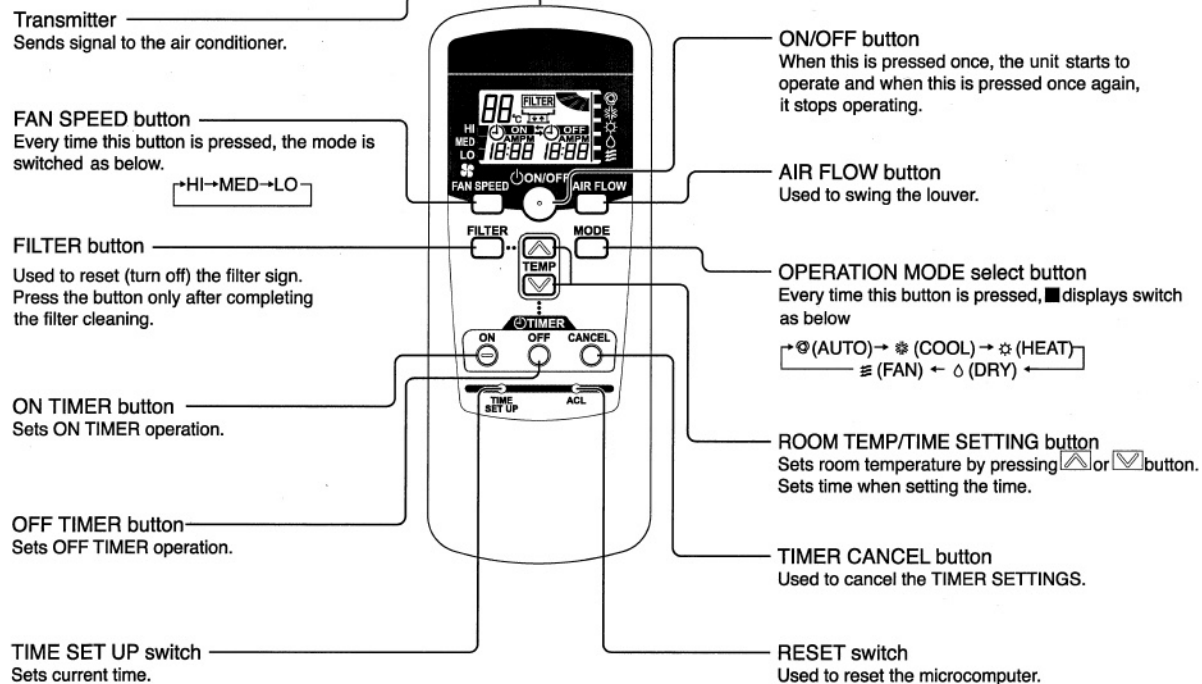
Note : Two R03 AAA dry cell batteries for remote controller are enclosed.

Installation of remote controller

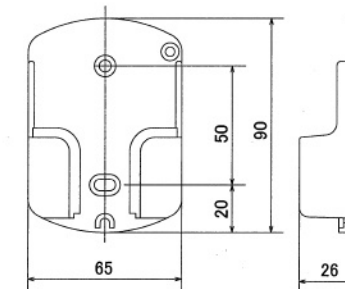
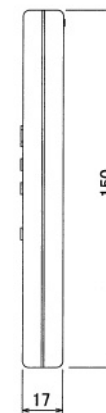
DO NOT install it on the following places in order to avoid malfunction.

- (1) Places exposed to direct sunlight
- (2) Places near heat devices
- (3) High humidity places
- (4) Hot surface or cold surface enough to generate condensation
- (5) Places exposed to oil mist or steam directly
- (6) Uneven surface

Operation section



Remote controller



Remote controller holder

* All displays are described in the liquid crystal display for explanation

Adapted to **RoHS** directive